



## Items of Interest

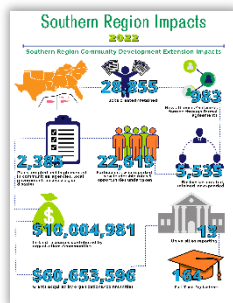
Recently Released: SRDC Publications – Coming Together for Racial Understanding and Heirs’ Property



The Southern Rural Development Center along with partners of [Coming Together](#) and [Heirs’ Property](#) recently published research briefs and pre-print manuscripts.

To view, visit the SRDC’s [Special Topics landing page](#).

## Southern Region Standard Indicators Impact



Each year, indicators are collected from states in the Southern Region to show the collective impact of Extension community development programs.

The collected and compiled highlights show the jobs created, grants awarded, plans new and revised for community development, and networking connections made throughout the previous year. Also included in this publication are short vignettes that provide insights behind the metrics.

To view this year’s indicators, visit the [Southern Region Impacts landing page](#).

## Webinars:

**SERA 47 Local and Regional Food Systems Webinar: *Fostering Agribusiness Entrepreneurship and Development within Socially Disadvantaged Communities through the HBCU Agriculture Business Innovation Center***

Presenter:  
 Dr. Kenrett Y. Jefferson-Moore

**Thursday, September 7, 2023  
 1PM CT/2PM ET**

[REGISTER HERE](#)

## SRDC Staff Participates in the Delta Regional Forum and Delta Scholars Program

### Reflections from Southern Rural Development Center Director, John J. Green



The Delta Directions Consortium (DDC) is a diverse and ever-evolving network of scholars and practitioners associated with universities, nonprofit organizations, and philanthropic foundations. The Delta Regional Forum (DRF), organized by the Southern Rural Development Center (SRDC) and the University of Mississippi Center for Populations Studies and Community First Research Center for Wellbeing & Creative Achievement (through the latter's Delta Fellows Program), is an annual event to provide time and space for sharing diverse perspectives and experiences on regional development issues and strengthening capacity for applied research and community development

action. With activities including presentations, panels, and workshops, diverse participants gain information and expand their networks across community and university lines. This year's Forum included several sessions of dialogue on issues including community resilience, maternal-child health, local food systems, and education. Seventeen undergraduate Delta Scholars also presented at the forum as part of their two-week summer experience. A DDC-affiliated multi-institutional program, Delta Scholars is led through the Mississippi State University Shackouls Honors College, with additional partners including the SRDC, Harvard University, and Brandeis University, Delta Scholars.

## Job Opportunities

### Assistant Administrator, Community Development and Outreach, Fort Valley State University

#### Open until filled.

The assistant Administrator for Community Development and Outreach will develop, coordinate, and facilitate programming through the Cooperative Extension Program designed to assist communities to realize their long-term goals; through provision of education, technical assistance, and opportunities to secure grants that support strategic planning and community visioning to provide a foundation for economic development. Coordinate or assist in the coordination of programs through outreach efforts with USDA Agencies, State, private and public and nonprofit entities. Master's degree in Agricultural Economics, economics, business administration or other business disciplines is required. Preference will be given to applicants with extension and strong community development experiences. Applicants with degrees in closely related disciplines with community development experiences may also apply.

[LEARN MORE AND APPLY](#)

### Associate Professor, Community Health, Family & Consumer Sciences Department, University of Tennessee

The position of Associate Professor in Community Health, Family & Consumer Sciences Department is responsible for planning, developing, and implementing research-based adult and you Extension programs in nutrition to promote safe food handling practices, healthy dietary habits, and to improve health and nutritional status among Tennesseans, including, but not limited to, Extension programs for diet-related disease prevention and management, food safety, and food preservation.

[LEARN MORE AND APPLY](#)

## Associate Director, Northeast Regional Center for Rural Development (NERCRD)

The Northeast Regional Center for Rural Development (NERCRD) seeks applications for an Associate Director position, which is renewable annually conditional on funding. The individual will lead the Center's outreach-oriented activities in consultation with the Director by:

1. fostering relationships among Northeast land grant universities and rural development partners;
2. identifying and responding to opportunities for cross-state collaborations and sharing of extension programs;
3. developing and implementing educational programs, including translating scientific findings into practice; and,
4. securing grants and conducting nationally recognized outreach activities consistent with the Center's mission.

The mission of the NERCRD is to work on a range of issues with land grant universities and other Northeast partners as well as nationally in support of regional economic growth and rural development.

Questions can be directed to Stephan J. Goetz, NERCRD Director, Department of Agricultural Economics, Sociology, and Education, The Pennsylvania State University at [sjg16@psu.edu](mailto:sjg16@psu.edu).

[LEARN MORE AND APPLY](#)

## Conferences, Workshops, Trainings

---

### National Extension Tourism (NET) 2023 National Conference

**In-person: September 24-27, 2023, Milwaukee, Wisconsin. Registration ends September 17<sup>th</sup>.**

"Envisioning the Future of Extension in Tourism." This is an opportunity for Extension professionals, academic faculty, industry professionals, and others working in the broad area of tourism and recreation, including tourism service providers and businesses, to share programs, initiatives, research, and success stories, and network with other professionals. The conference is open to all industry and academic professionals.

Travel scholarships are still available. Priority for available scholarship funding will go to participants from underrepresented U.S. institutions (e.g., 1890s, 1994s, and other minority-serving institutions), county extension offices, and State Rural Development Councils. Additionally, there is funding available to specifically support student participation with priority for participants from underrepresented institutions and Sea Grant professionals.

[LEARN MORE AND REGISTER](#)

## Extension Disaster Education Network Conference

**In-person: September 26-29, 2023, Marriott Savannah Riverfront, Savannah, Georgia**

Once a year, EDEN delegates assemble at the EDEN Annual Conference to share best practices, developing research, showcase projects that have been completed throughout the year, and enhance skill sets through professional development opportunities. The four-day Annual Meeting rotates by region and is hosted in a location that offers delegates the ability to learn about diverse emergency preparedness issues facing the local community.

[LEARN MORE AND REGISTER](#)

## 2023 Professional Agricultural Workers Conference

**In-person: October 29-31, 2023, Montgomery, Alabama**

The Professional Agricultural Workers Conference (PAWC) is a forum committed to a world that values and promotes equal opportunity equitable access to information and technology for sustainable development of communities and natural resources.

[LEARN MORE & REGISTER](#)

## 2024 National Association of Community Development Extension Professionals (NACDEP) Conference

**In-Person: June 17-20, 2024, Houston Texas**

Save the date for the 2024 National Association of Community Development Extension Professionals (NACDEP) conference. More information coming soon.

This material is based upon work supported by the National Institute of Food and Agriculture, U.S. Department of Agriculture. Any opinions, findings, conclusions, or recommendations expressed in this publication are those of the author(s) and do not necessarily reflect the view of the U.S. Department of Agriculture.