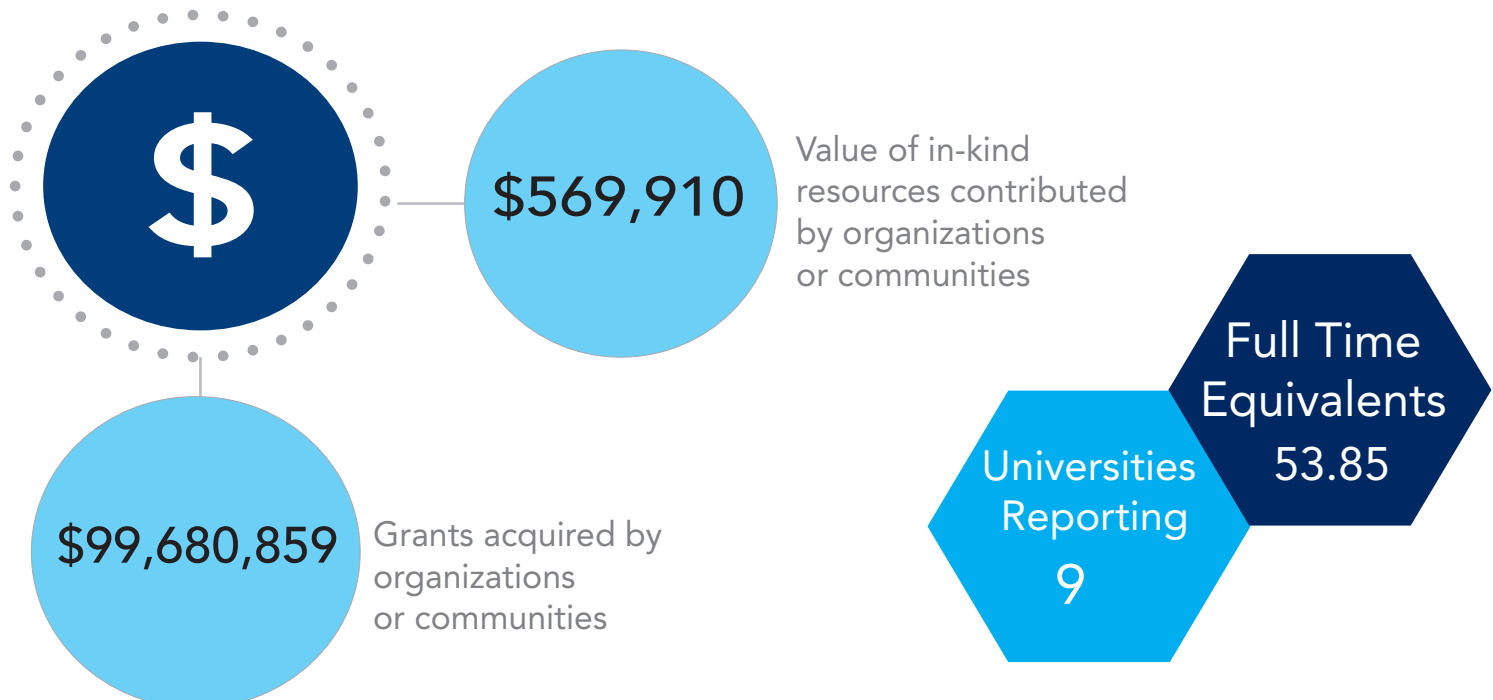
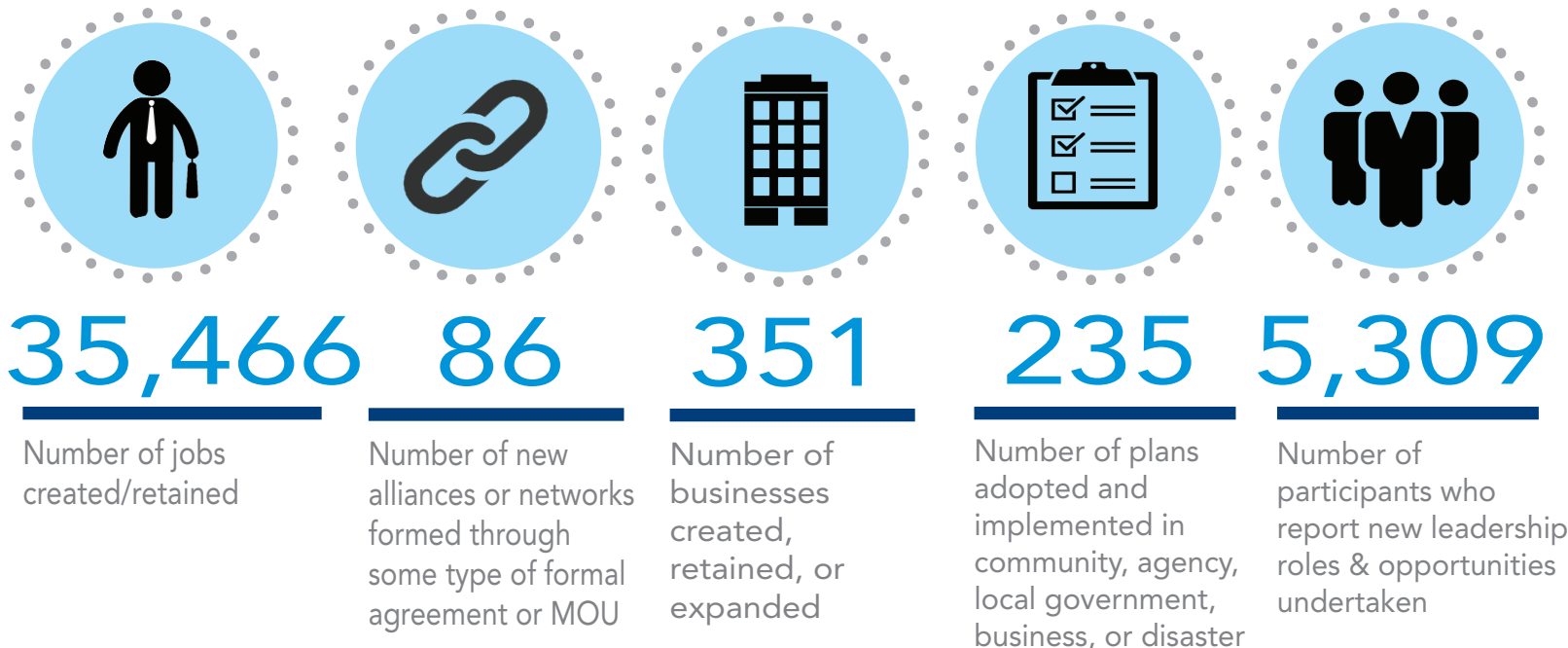


Strengthening Communities

Southern Region Successes

July 2015 - June 2016

Southern Region Community Development Extension Impacts



Southern CRD Impact Stories

Arkansas

University of Arkansas

Programs focus on strengthening businesses, policy education, cultivating leaders, and building local capacity. Our Arkansas Procurement Assistance Center helped businesses secure more than \$126 million in contracts this year with 2,526 jobs created or retained. Breakthrough Solutions and our program partners worked with Paris, Arkansas to create a new career center.

Georgia

Fort Valley State University

Fort Valley State University's Cooperative Extension Program worked with a local non-profit organization, to rehabilitate eight homes owned and by 15 very low to low-income seniors and/or disabled citizens in Fort Valley. The project saved 15 residents approximately \$16,753 in home rehabilitation services to include roof replacements and installation of wheelchair ramps. Participants also saved a total of \$7,207 by using volunteer labor providing an average cost savings of 25% per home within the first year.

Kentucky

University of Kentucky

The College of Agriculture, Food and Environment's Community and Economic Development Initiative of Kentucky is currently working with 22 hospitals across the state to assist in the preparation of the Affordable Care Act mandated Community Health Needs Assessment. Of the thirteen that have completed their 2016 assessment, all implemented at least three strategies to address the needs identified from their previous CHNA (2013).

Oklahoma

Oklahoma State University

The OSU e-commerce program works with small businesses to help them establish a market presence and compete in today's economy. A variety of workshops are available for businesses. Over the past 5 years, 671 businesses have participated in the workshops. The results included businesses gaining a web presence; dramatically increased visibility that have led to increased profits; and savings for businesses who no longer outsource their website work.

North Carolina

North Carolina State University

The NC AgVentures program, awarded 23 community and producer grants and invested \$240,000 in NC communities. Grant impacts resulted in 72 new jobs and 100 retained jobs, and \$188,000 in new income to date. Twenty-five new grants totaling \$240,000 were recently awarded.

Clemson University

Clemson Extension played a key role in the development of the Mobile Farmers Market (MFM). The MFM collaborates with the Colleton County Farmers market and local SC farmers to promote healthier food alternatives in the area, counteracting the high obesity rate (67%) in the county. Due to the success of the MFM, extension can now also offer a Community Supported Agriculture (CSA) market to African American Churches in the county.

South Carolina State University

The 1890 Research and Extension Program is collaborating with the SC State School of Business and the Palmetto Development Group to develop a Regional Center for Innovation and Entrepreneurship in the Orangeburg County region. The goals are to implement an incubator component, and to develop collaboration among business development organizations and educational institutions.

Prairie View A&M

The Community & Economic Development Unit of the Cooperative Extension Program received \$130,000 from USDA Office of the Secretary to train entrepreneurs interested in starting a business in energy auditing and home weatherization. As a result 18 of 20 participants were Building Performance Institute certified, 8 received internships, 8 started a business, 2 started non-profit organizations, and 8 received contract offers. The estimated economic impact is \$1,820,700.

Texas A&M

County-wide trainings on walkability, Crime Prevention through Environmental Design, Tacticalisms, and healthy cooking and the formation of four community coalitions have resulted in community assessments, action plan development, policy development, education and certifications, two new farmers markets, and park improvement efforts.

Virginia Cooperative Extension

With partners, Virginia Cooperative Extension implements programs to increase healthy food access. One is the New River Valley "prescription for produce" model where physicians at the Community Health Clinic write prescriptions for physical activity and produce from the Farmacy garden. Over 830 lbs. of produce were harvested in 2015. And in Petersburg, seven community and inner-city school gardens were started.

South Carolina

Texas

Virginia