

# DIGITAL ACCESS CONTINUUM

## ← AWARE

Being **AWARE** of how broadband can be used as a resource

## AVAILABLE

Having **AVAILABLE** broadband infrastructure

## ACCESS

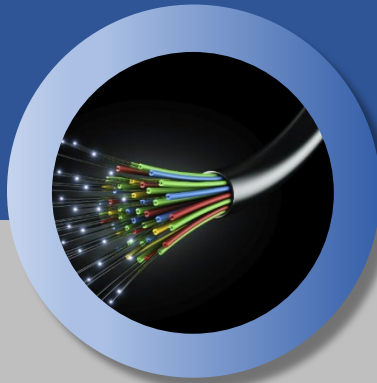
Having a computing device capable of effectively providing **ACCESS**

## ADOPT

Choosing to **ADOPT** or subscribe to an internet service

## → ADVANCE

Using broadband service to **ADVANCE** quality of life outcomes



### Roles for Cooperative Extension Service

**Educate** community on potential benefits of broadband access.

**Convene & facilitate** community planning processes.

**Assist** communities in planning that considers access issues, especially for underserved.

**Inform** community members on the value of access & aid in finding community resources.

**Provide** digital literacy training within the context of all program areas.

## Why our work matters:



### Capacity at the local, state, and national levels:

- Land-Grant Institutions in every state and territory.
- 1862, 1890, and 1994 institutions engaging diverse populations and underserved groups.
- Offices in virtually every county, parish, and borough in the nation.